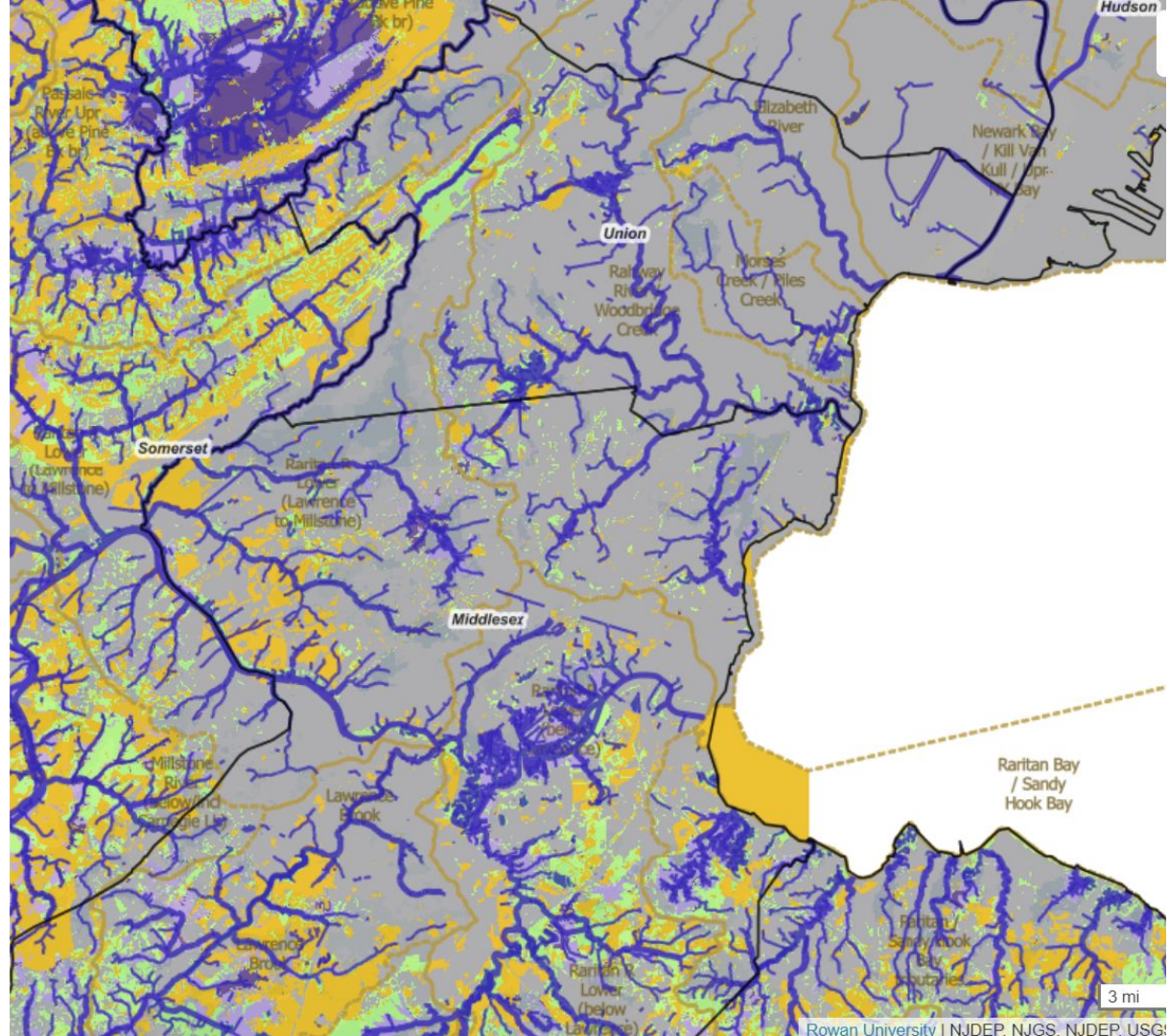


Layers Chosen:

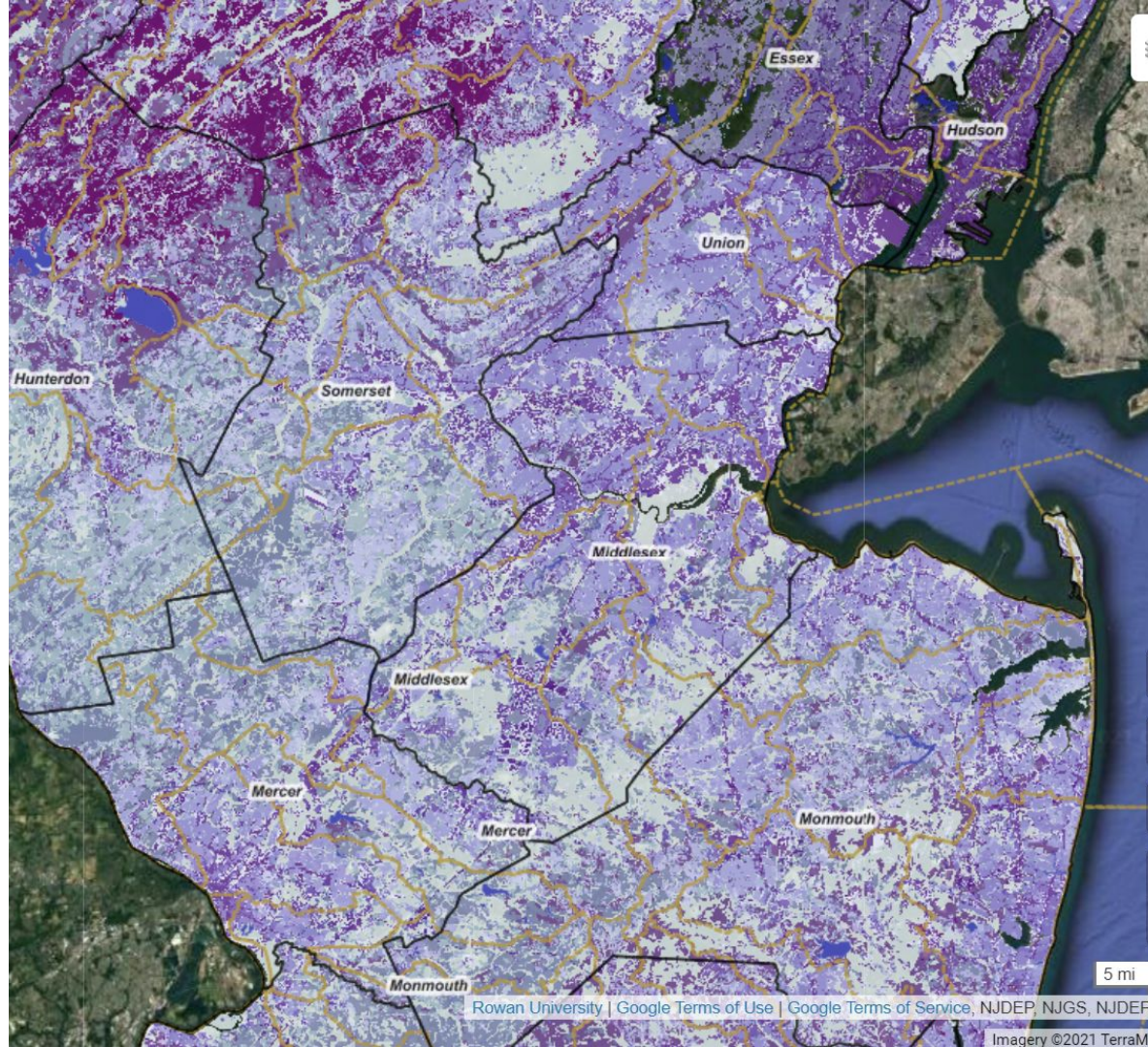
- Priority Lands for Water Quality Protection
- State and County Boudaries
- Watersheds
- Waterbodies

I chose each layer to show which places are endangered the most. If I were to talk to local residents about keeping their watershed healthy I would want to show them which parts they should focus on most. That's why I chose the layers to show which ones needed the most attention.





The layers I chose are the Watersheds, Impervious %, and Groundwater Recharge. I think that the Watersheds are important because they show which section of land will affect which body of water. I think that the Impervious % is important because I think it's important to know how impervious an area of land is, and how it will affect the water body. I think the Groundwater Recharge is important because groundwater recharge can show the difference between how healthy the waterbodies are.





I chose the “Priority Lands for Water Quality Protection” checkbox so that the people who live in the area can be aware that these areas are important for recharging aquifers and they cannot use them for other purposes because they are protected. I selected the “Groundwater Recharge” box so that people can know how fast the water will be replenished in the body of water so that they can determine how much water they can collect. I clicked “Priority Lands for Water Collection v2” because it is important for people to know that those places have to be protected for clean water and habitats. I checked “Ecological Floodplain Areas” so that people know places that are likely to flood. I chose “NJ Hydrography” because it is important to know where the water bodies and rivers are in a map of the water in their area to know where the water is flowing in their area to the watershed.

